



Meeting Health and Environment Policy Committee
Date and Time Thursday, 30th September, 2021 at 6.30 pm.
Venue Walton Suite, Guildhall, Winchester

S U P P L E M E N T A R Y A G E N D A

Presentations given at meeting

Agenda Item.

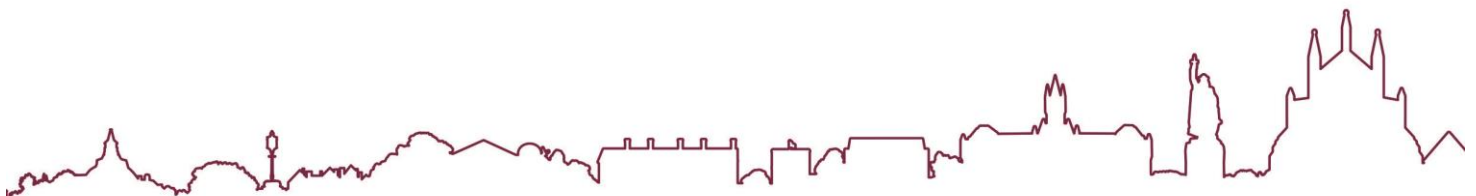
8. Carbon Neutrality Programme - Transport policies/actions (Pages 3 - 8)
(HEP014)
9. Vision for a sustainable, decarbonised future Winchester District (Pages 9 - 40)
(HEP015)

City Offices
Colebrook Street
Winchester
SO23 9LJ

Lisa Kirkman
Strategic Director and Monitoring
Officer

1 October 2021

Agenda Contact: Claire Buchanan, Senior Democratic Services Officer
Tel: 01962 848 438 Email:cbuchanan@winchester.gov.uk



This page is intentionally left blank

Update on Decarbonising Transport

Heath & Environment Policy Committee
Thursday 30 September 2021

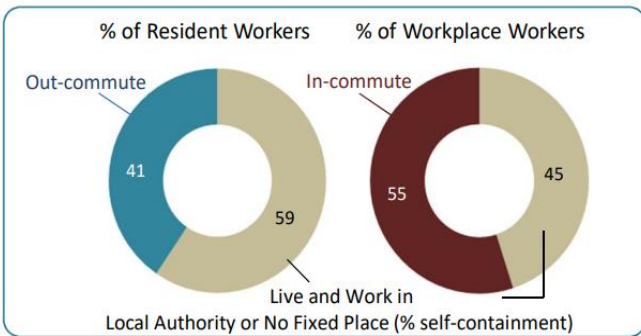
Page 3

Agenda Item 8



Hampshire
County Council

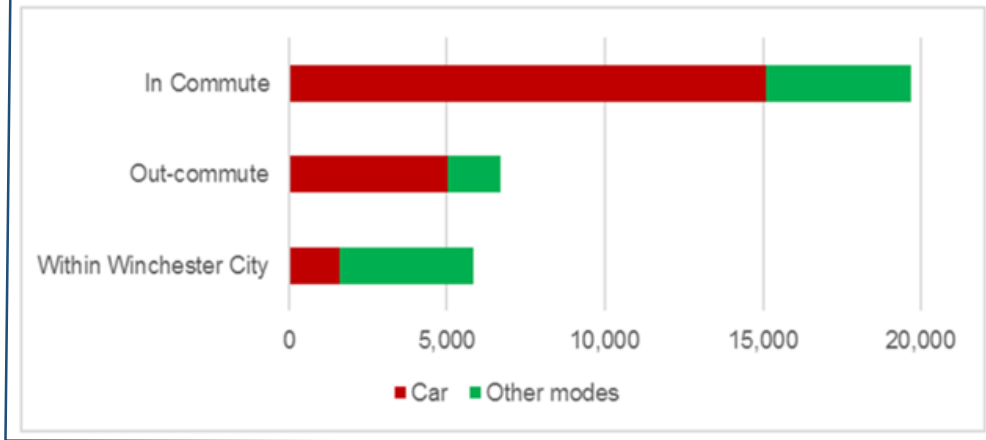
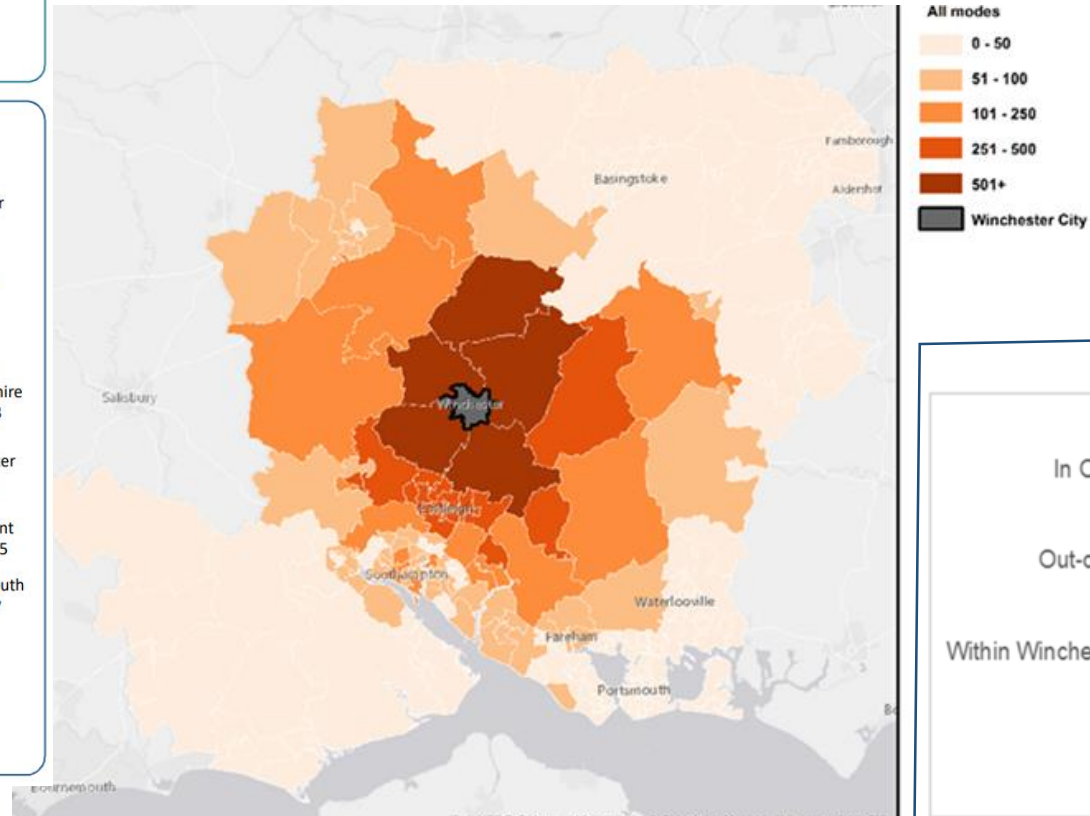
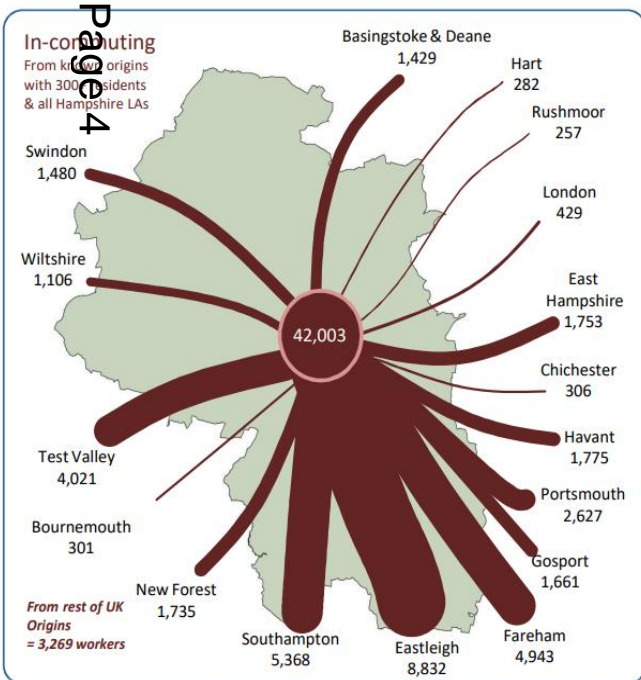
How journeys into Winchester are made (2011 Census)



Largest commuting flows from the parishes/ villages nearest to city & from the north half of Eastleigh Borough

Majority of commuters travelling within Winchester City that use non-car modes are travelling by walking or local bus

Majority of in-commuters that use non-car modes are travelling by P&R, rail and local bus



Hampshire LTP4 work on transport decarbonisation

LTP4 will have strong policy focus on interventions that would be needed to make surface transport carbon neutral by 2050 (in line with the Hampshire Climate Change Strategy)

- 37% of CO₂ emissions in Hampshire are transport-related, and 65% are caused by cars.
- DfT data shows that traffic on Hampshire roads grew by +18% between 2000 and 2019
- Traffic emissions are higher than they were in 1990, and are still rising.
- 45% of households have 2 or more cars.
- National policies for transition to EVs will not reduce emissions far enough or fast enough, especially over the next 10 years.
- Rapid local action is needed

Unchecked growth in CO₂ emissions will have severe consequences for the maintenance and resilience of our network, our quality of life, and our species and habitats; and impose significant costs on the Council

Various policy changes may be required in order to achieve net Zero carbon by 2050:

- Acceleration of EV uptake (faster than national average e.g. promote EV car club use)
- Improved digital connectivity (working from home)
- Active/personal mode provision
- Planning for living locally (20 minute neighbourhoods)
- Public/shared transport provision
- Demand management

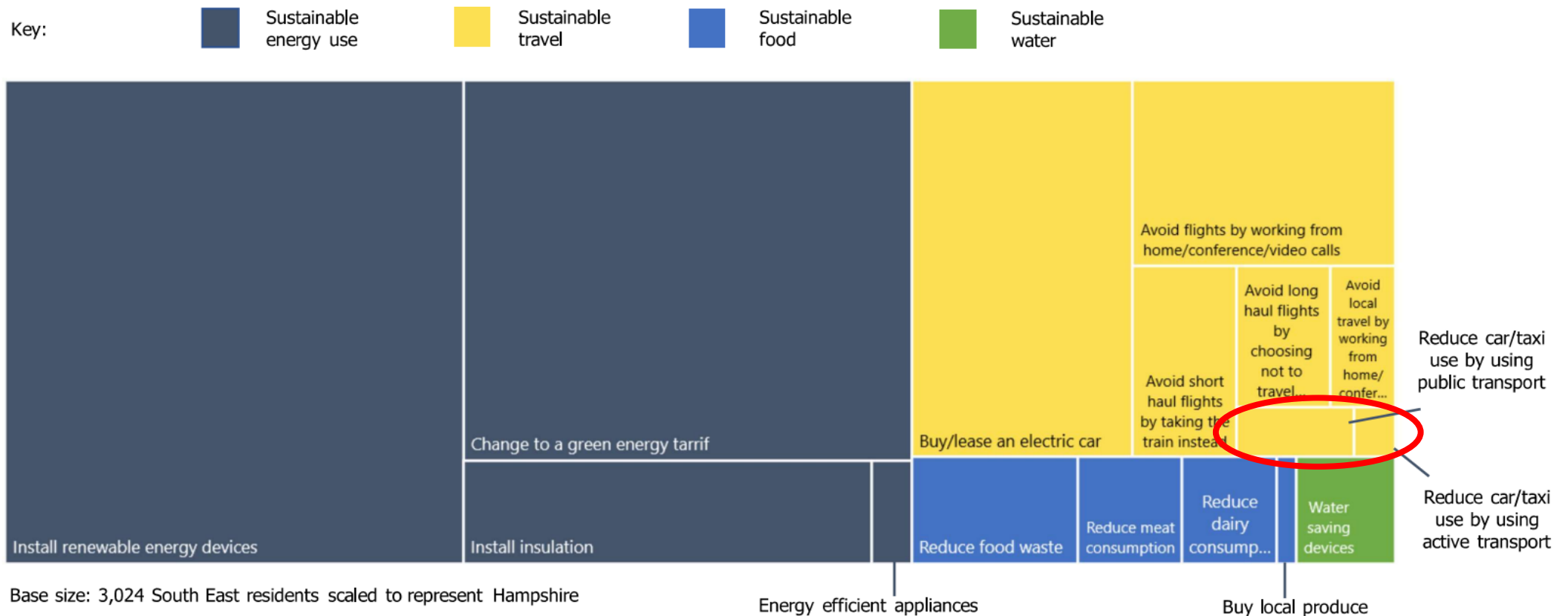
Behaviour change needed to achieve 2050 net zero

- Compared to other interventions, achieving increased use of active travel and local bus services would make a modest contribution towards decarbonising Hampshire by 2050.

Increasing levels of active travel is vital for achieving other policy objectives - air quality, public health (physical activity, wellbeing and quality of life).

To decarbonise transport, persuading people to cut air travel, work from home and switch to EVs will be important.

Page 6



Decarbonising transport in short & medium term

We are progressing a range of other measures that will help support less car use and dependency for journeys into Winchester:

- a. **Design work on WMS high priority measures** – progressing design work on active travel improvements and changes to city centre traffic circulation
- b. **A Bus Recovery and Growth Plan** – including C-19 recovery, service improvements, zero emission buses. Work will consider enhancing intermediate distance routes.
- c. **Development of a District LCWIP** – so can connect the ring of villages beyond Winchester to the city via safe, high-quality walking and cycling routes.
- d. **Study to assess if a Mobility Hub in vicinity of Winchester rail station is feasible** (potential funding available from National Highways)

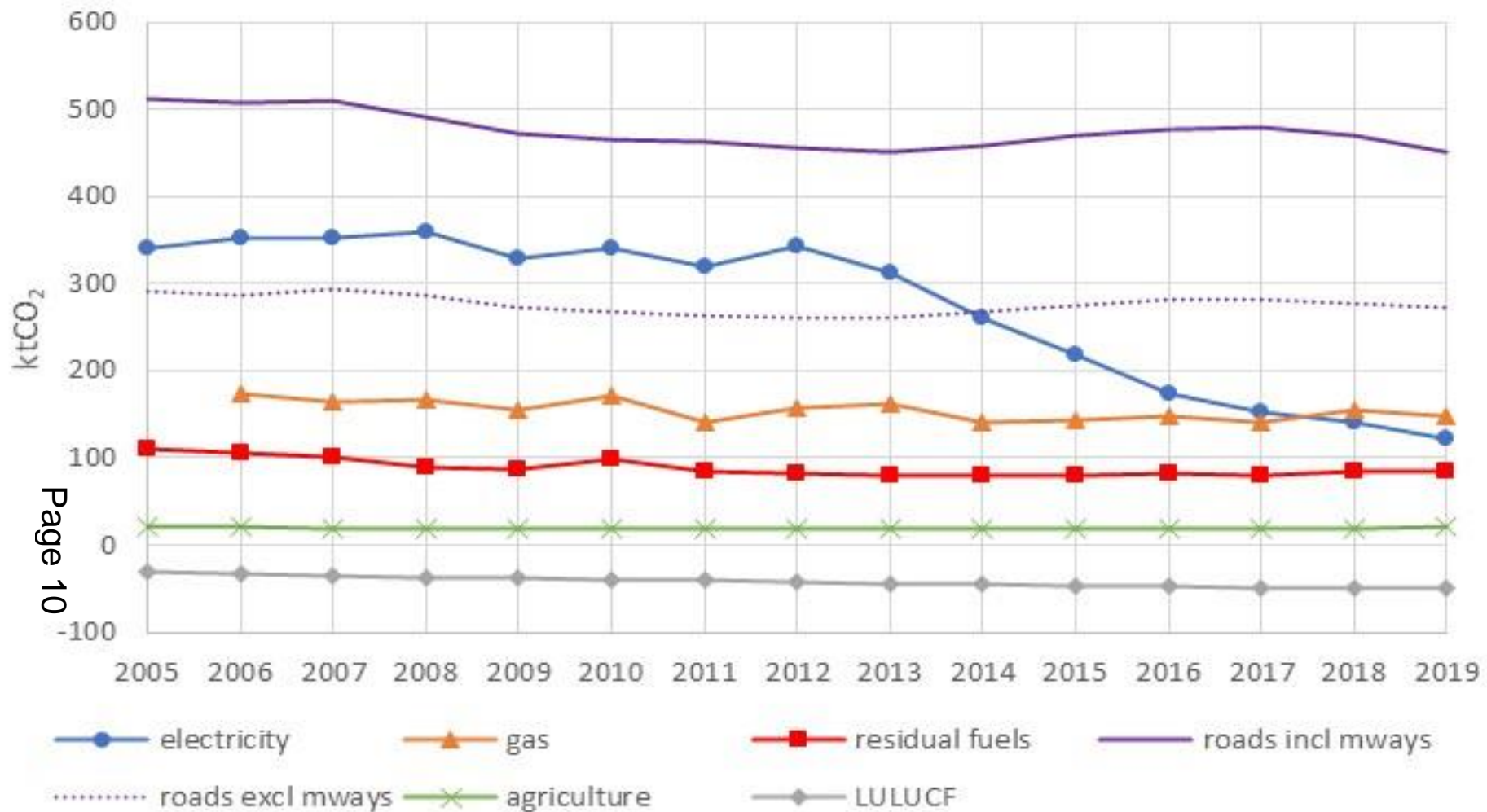
This page is intentionally left blank

Winchester District emissions to 2019

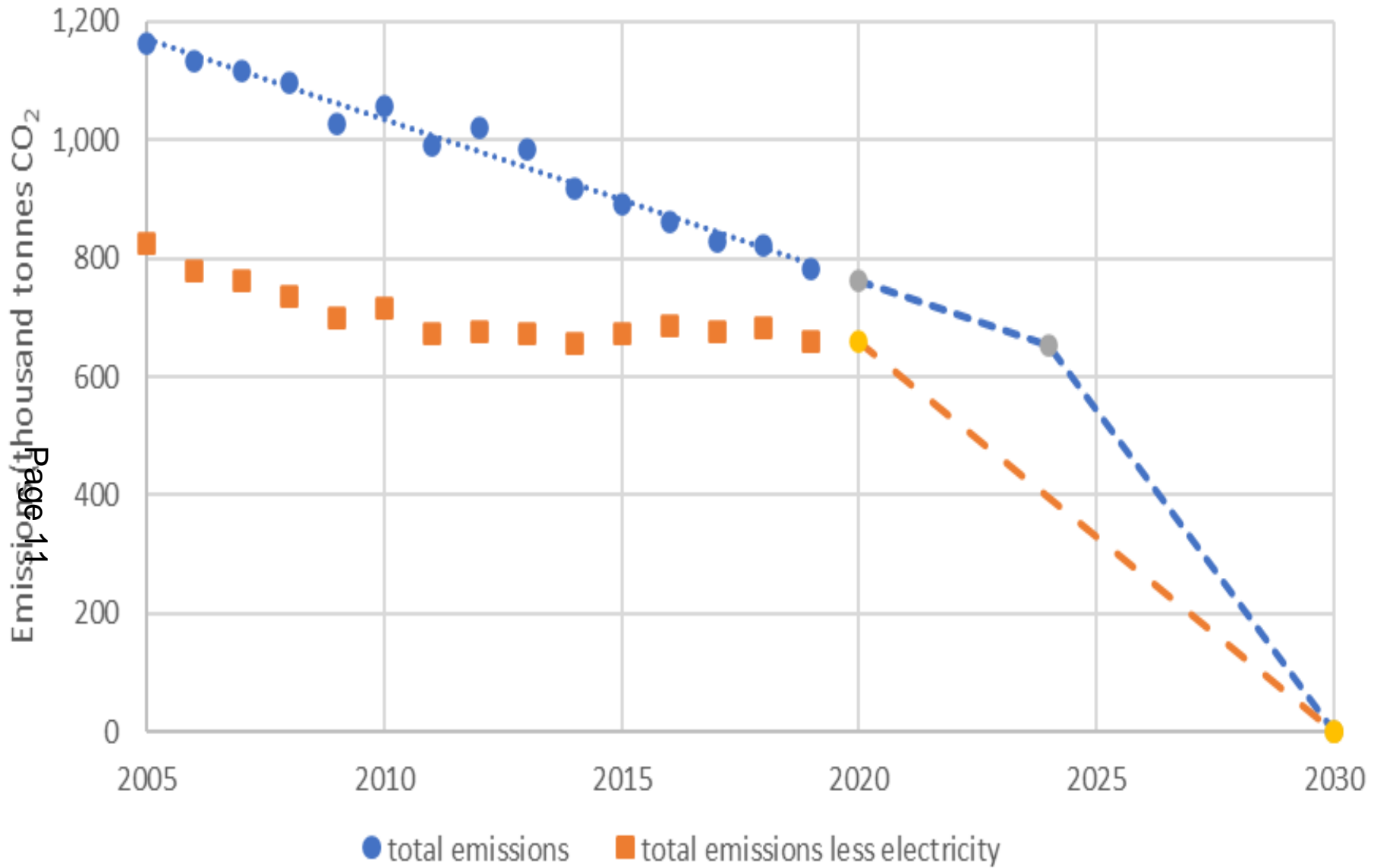
Page 9



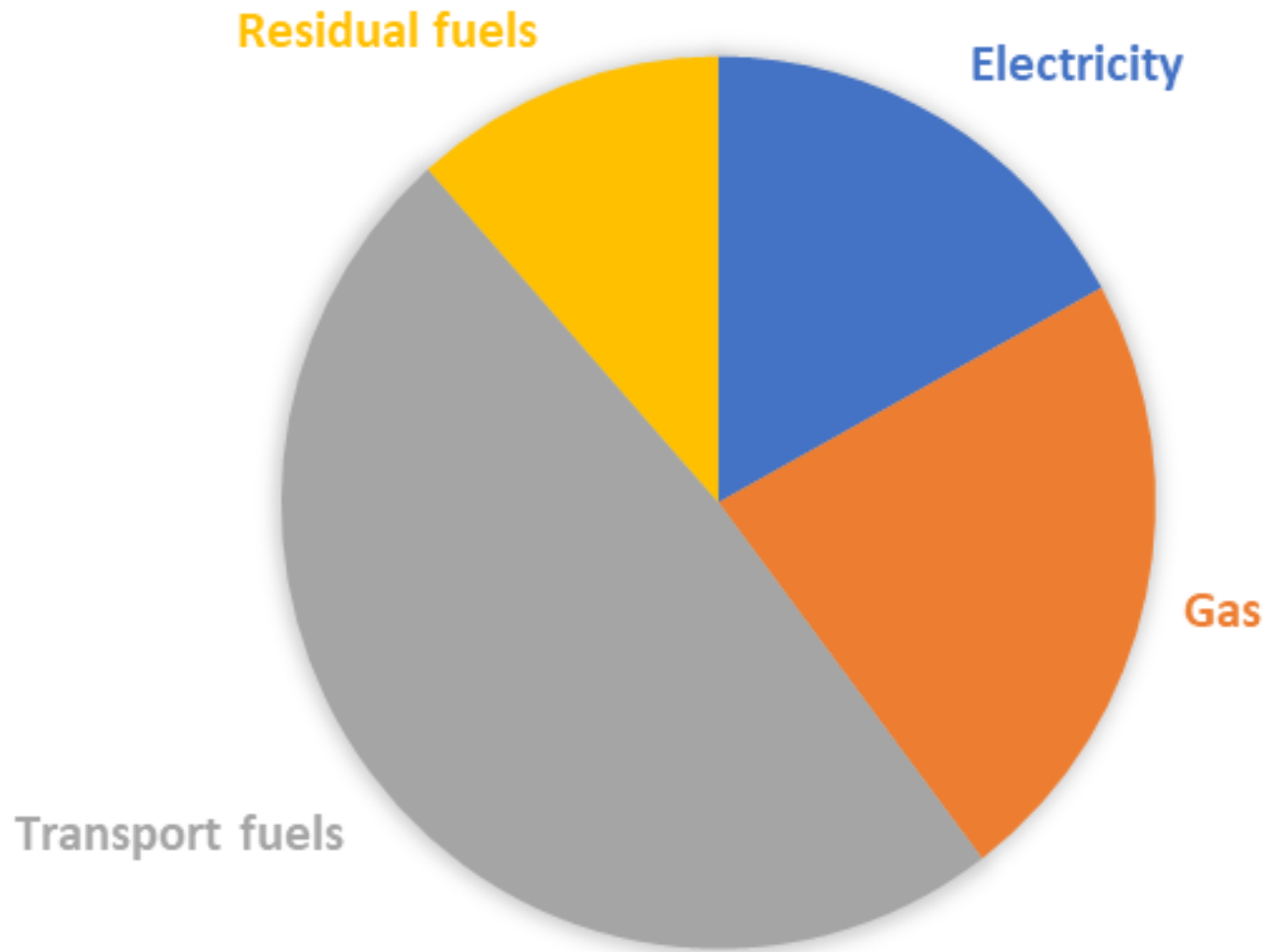
Agenda Item 9



CO₂ annual emissions in the Winchester District 2005-2019. Omitting electricity, emissions in the district have barely changed since 2011



CO₂ annual emissions in the Winchester District 2005-2019



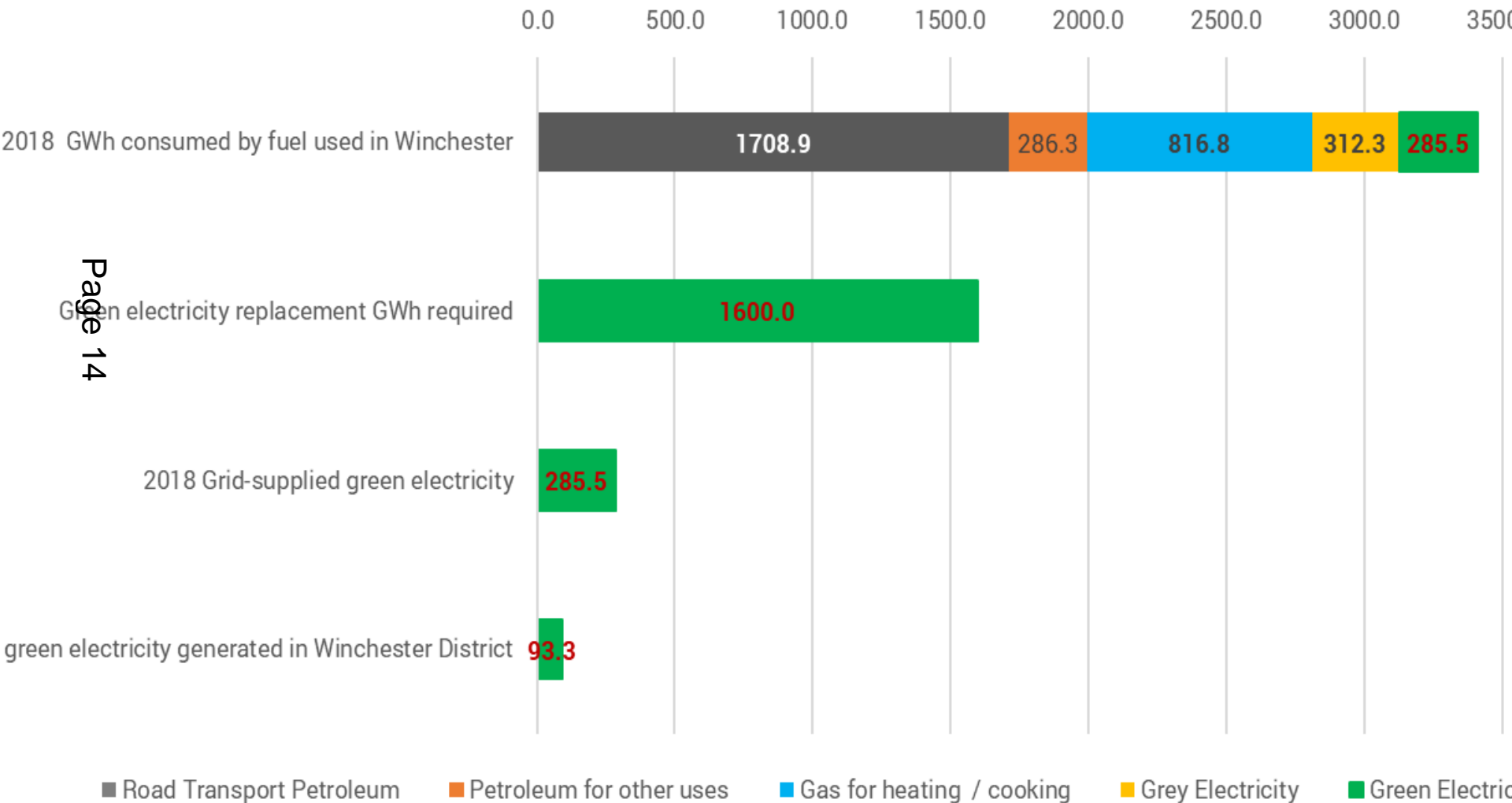
Relative amounts of energy consumed for the main fuel categories in the Winchester District, 2019

What changes will make the biggest impact on the climate?

- Cut emissions from internal combustion engines
- Cut emissions from heating
- Cut emissions from big buildings
- Foster sustainable use of land
- Green investment
- More renewable energy generation

GWh: replacing road fuel and gas with green electricity

assuming battery electric is 2.5 times more efficient than internal combustion, air source heat pumps / induction are 4 times more efficient than gas



Suggestions for the City Council

- Concentrate on where you will have the biggest impact
- Act fast
- Act in partnership
- Use money and assets
- Public opinion is changing fast – better to lead than lag behind it

This page is intentionally left blank

Portrait of Winchester: an outline roadmap

Prepared by William Adeney, Dr Savithri Bartlett and Dr Tammi Sinha
for Winchester City Council

Presentation to HEP Committee
30th September 2021

Agenda

- Introduction
- A Portrait of Winchester
- Doughnut Economics
- Review of selected Strategies & Plans
- Applying the Doughnut
- Findings & Recommendations

Page 18

Introduction

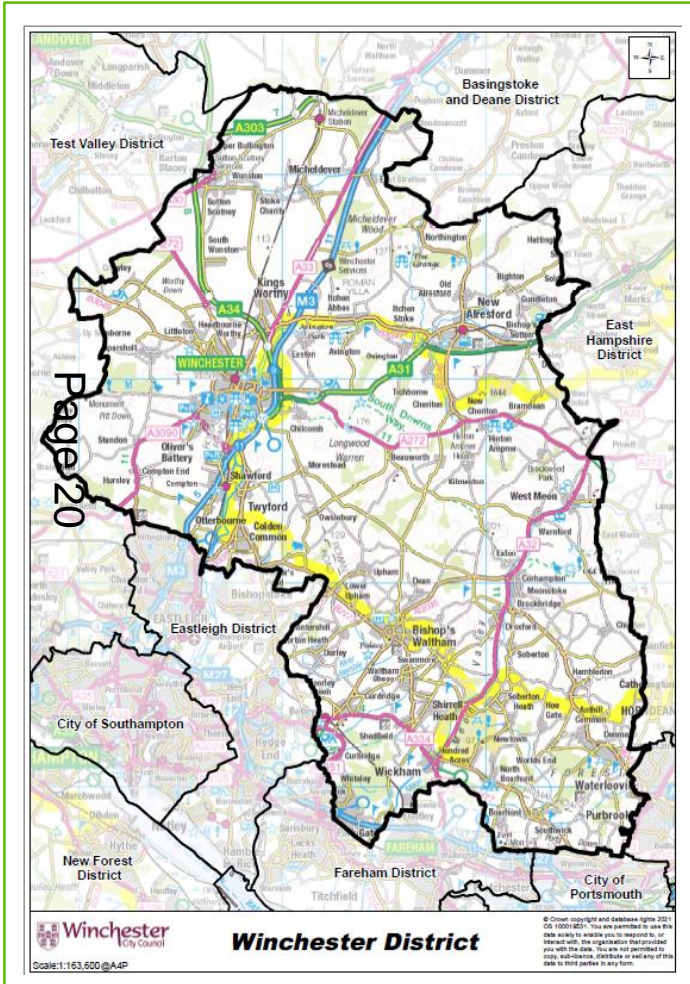
This report presents a concept for a coherent Roadmap for Winchester City Council to move from the present situation to a sustainable and regenerative future that allows all of Winchester District to thrive.

Winchester City Council in its 2020-25 Plan recognises that “*the climate crisis is the biggest challenge all of us face*” state than it is now.”

The approach set out here could be used to bring together policies, strategies and initiatives to create a clear pathway to this sustainable and regenerative future for Winchester District.



How can Winchester be a home to thriving people in a thriving place, while respecting the wellbeing of all people and the health of the whole planet?



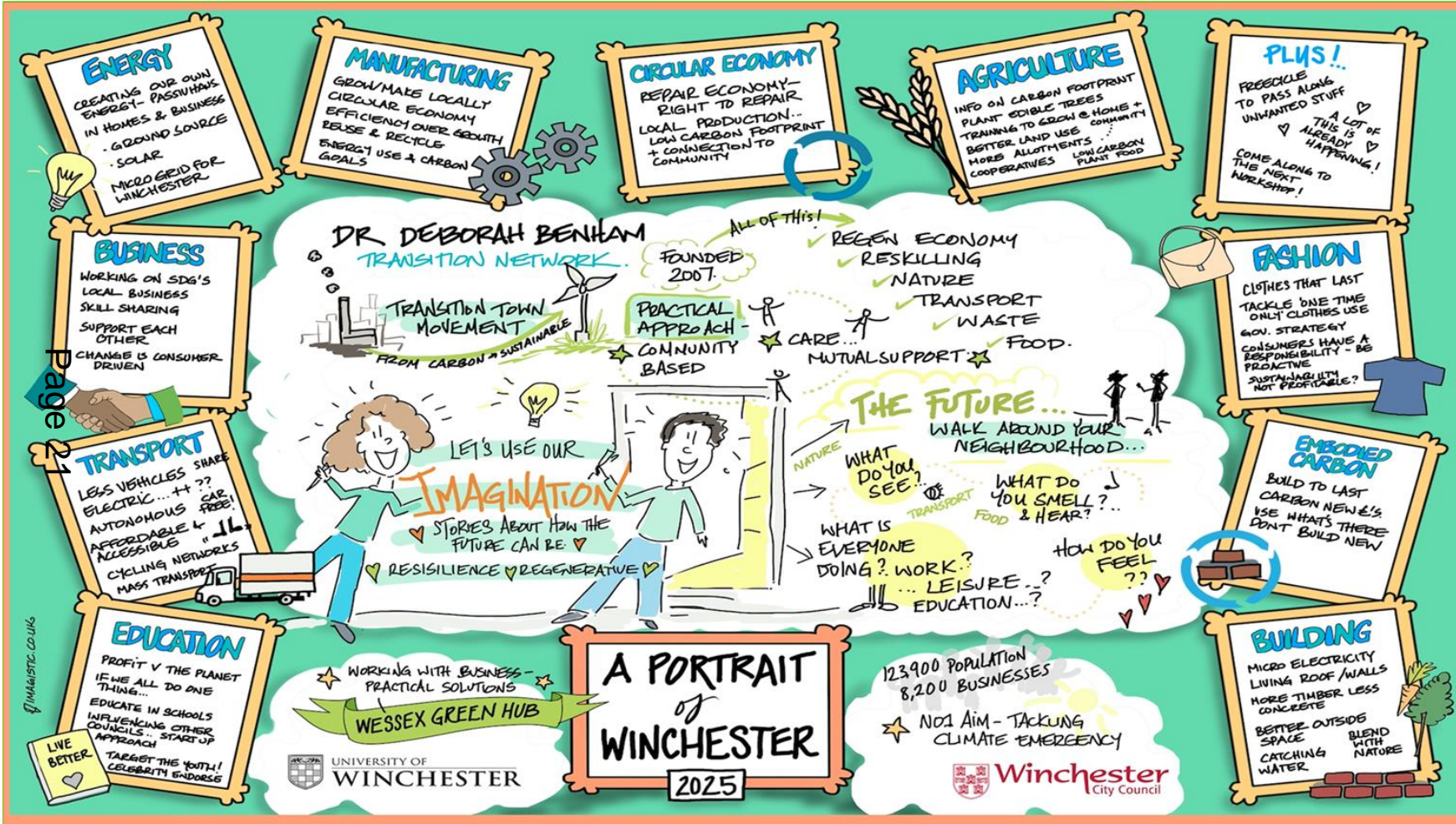
Creating a Thriving Portrait of Winchester District to:

- envision what it means to be a thriving city, combining social goals with ecological ones, and local aspirations with global responsibility
- connect a network of city actors, with diverse interests and concerns, through a common framework
- explore the city from a holistic perspective, inviting city actors to see interconnections, recognise tensions, and identify synergies for action
- inspire city-wide initiatives and co-creation through an iterative process of transformative innovation
- develop metrics fit for a 21st century city, that start to measure and reflect what it means for Winchester to thrive.

Map: copyright Ordnance Survey

Source: DEAL (2020a), DEAL (2020b)

WCC and WGH have run a series of 'Portrait of Winchester' workshops and drop in sessions to imagine a more regenerative future for the District

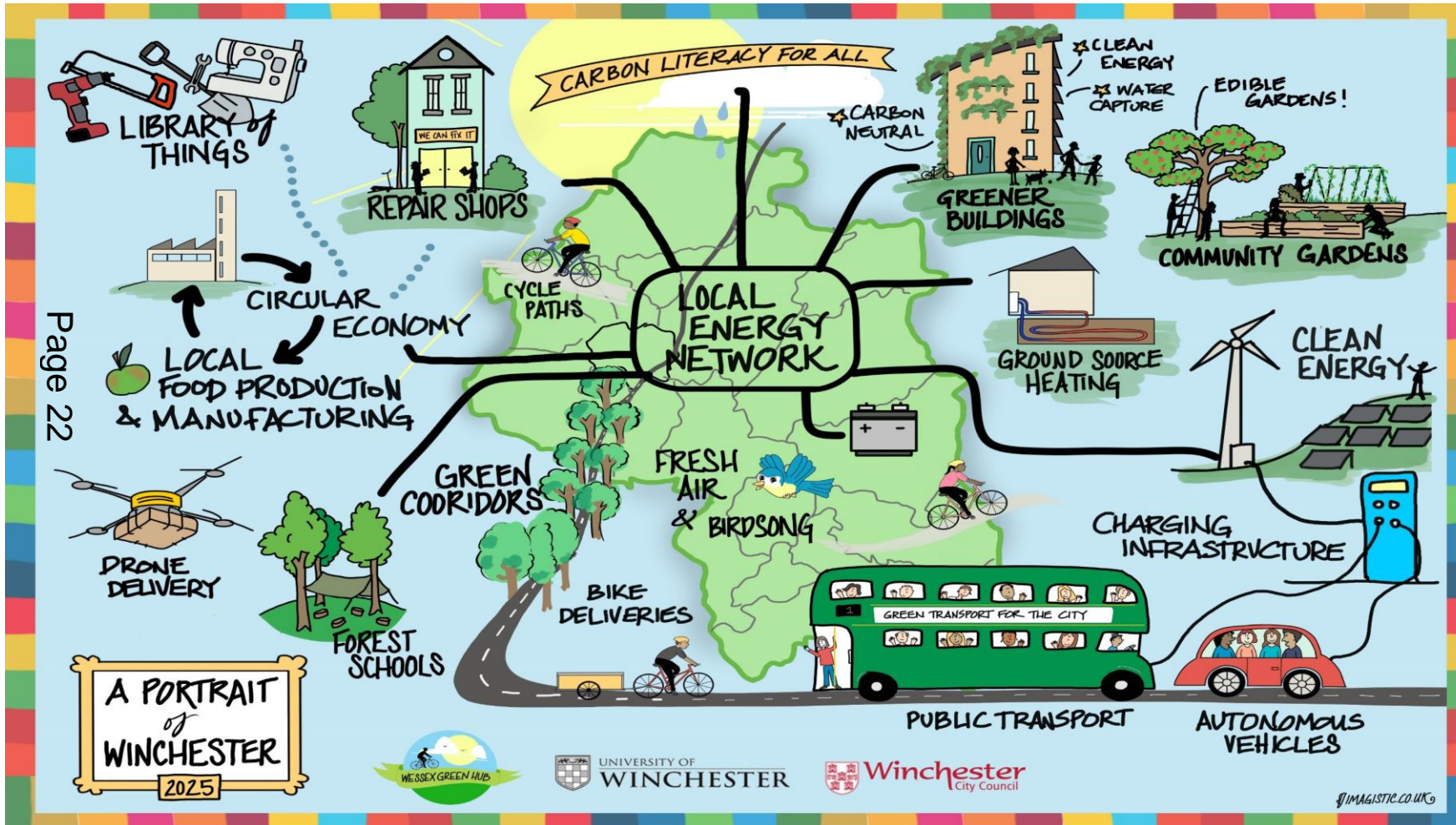


Portrait of Winchester workshop 1 (November 2020)

- Online workshop with an open invitation and around 60 local residents and stakeholders attending.
- Visioning exercise to create a first shared vision of a future Winchester District in 2040.
- Ten sector specific breakout sessions: Education, Buildings, Transport, Embodied Carbon, Business, Circular Economy, Energy, Industrial Processes, Fashion and Agriculture.

Source: Emma Paxton for WCC

The second Portrait of Winchester workshop was held in December 2020 and focused on identifying specific actions and initiatives

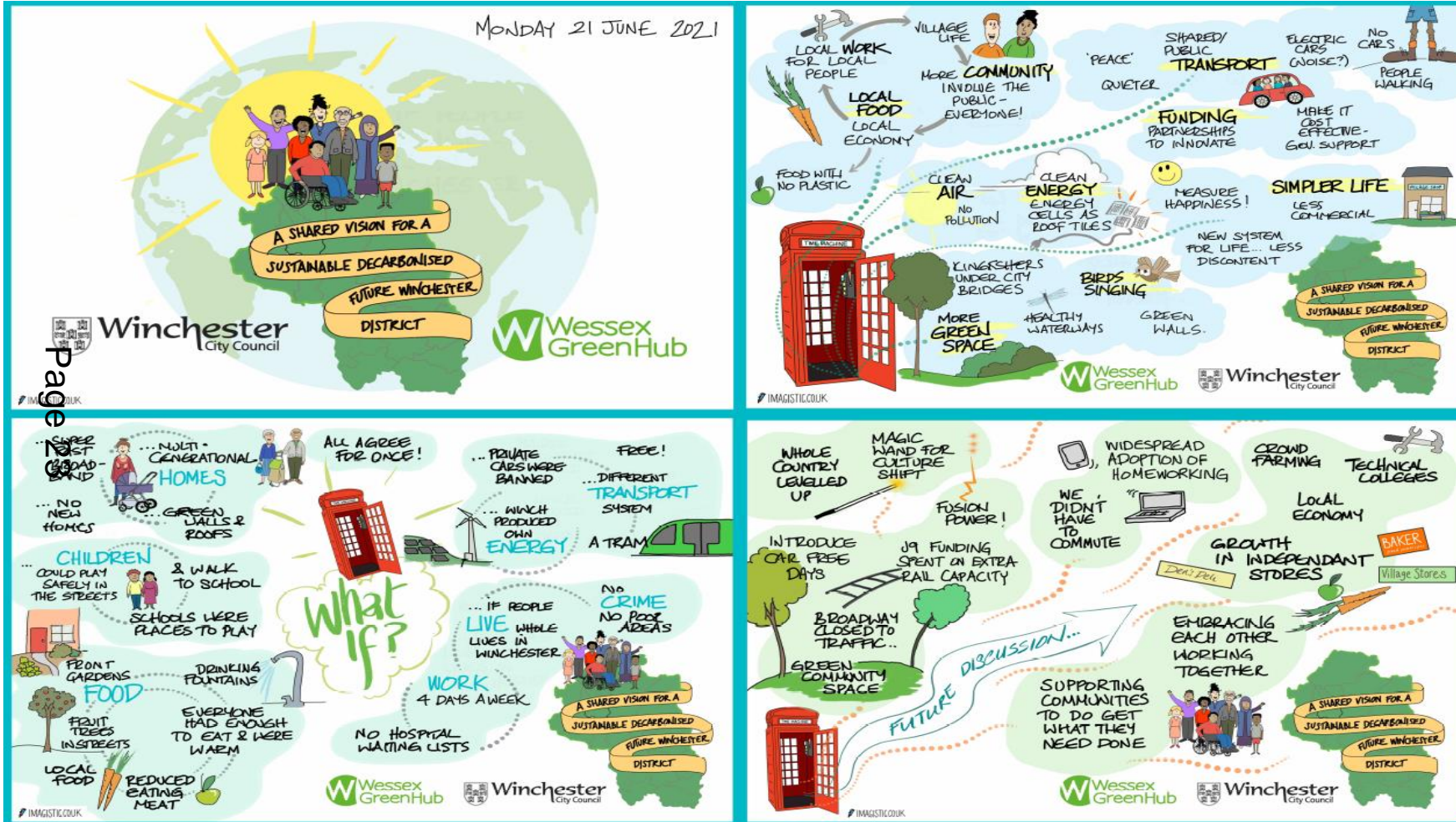


Portrait of Winchester workshop 2 (December 2020)

- Focus on determining actions, initiatives and policies that are needed from WCC as well as residents, businesses and other organisations
- Identified around 80 action and policy recommendations during the workshops.
- Created a visual Portrait of Winchester summarising many of the key ideas that emerged from the workshop discussions.

Source: Emma Paxton for WCC

The third workshop was held in June 2021 for the elected members and officers of Winchester City Council



Portrait of Winchester workshop 3 (June 2021)

- Provided an opportunity to imagine a flourishing future Winchester District, thriving in place for people and planet.
- Rob Hopkins invited the participants to be more imaginative, more playful, more capable and to do the kind of big thinking that the Climate Emergency, demands.
- The response was very engaged and positive from all participants.

Source: Emma Paxton for WCC

As we move from 'What is' through 'What if' to 'What next' we are developing online and physical spaces to 'Imagine Winchester'



Imagine Winchester

The next step has been to create a forum of connection and practice - both online and in person - to share ideas and exchange information and develop initiatives - bringing together some of the ideas of the Amsterdam Donut Coalitie and the Bologna Civic Imagination Office.

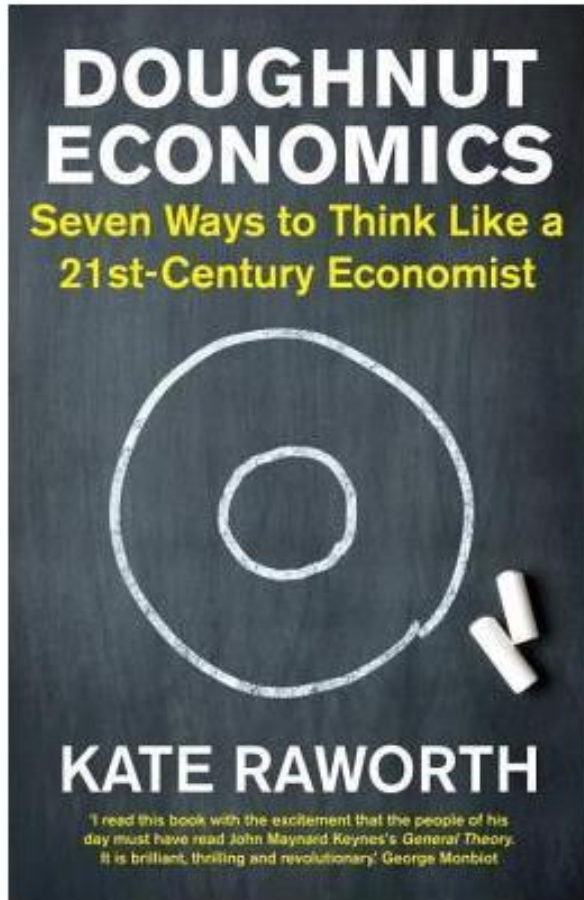
Imagine Winchester provides a forum for individuals, organisations and businesses to come together, to connect and to identify opportunities, actions and dreams for the local area.

As part of Winchester Green Week this week we have set up a public Imagine Winchester space at the Discovery Centre, and held two drop in Imagination sessions as well as a Facebook community space.

Credits: (1) Bologna Civic Imagination Office; (2) Rob Hopkins; (3) Institute of Imagination <https://ioi.london/>
(4) Design by: www.alistephens.co.uk , volunteer designer of Transition Kentish Town

To get from where we are now to the thriving future Winchester District that has been imagined we are encouraging the adoption of Doughnut Economics

Page 25



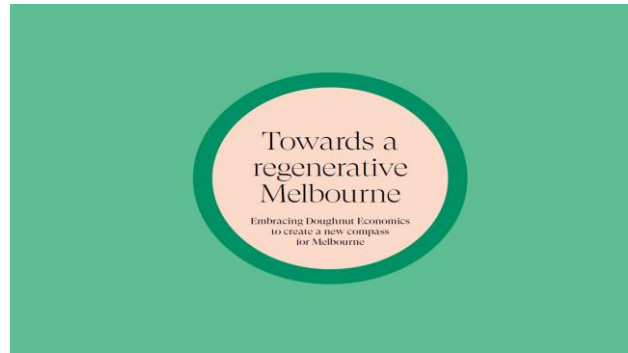
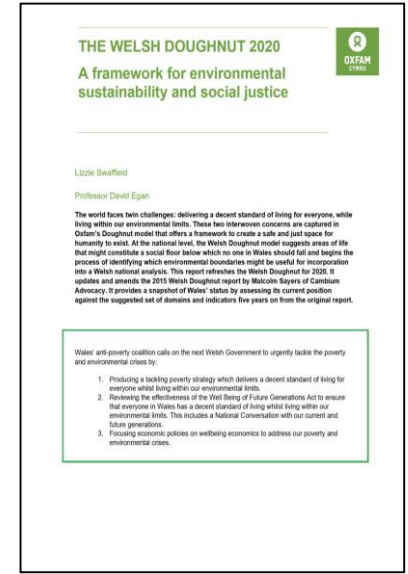
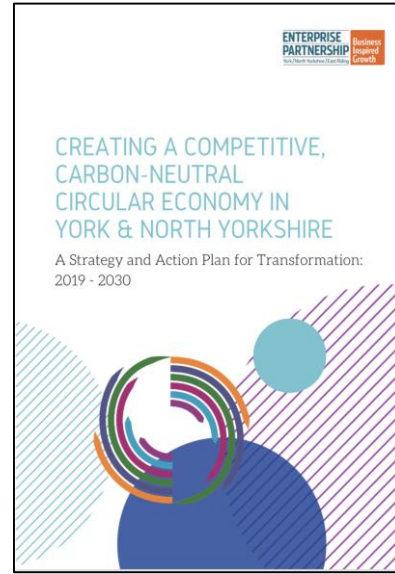
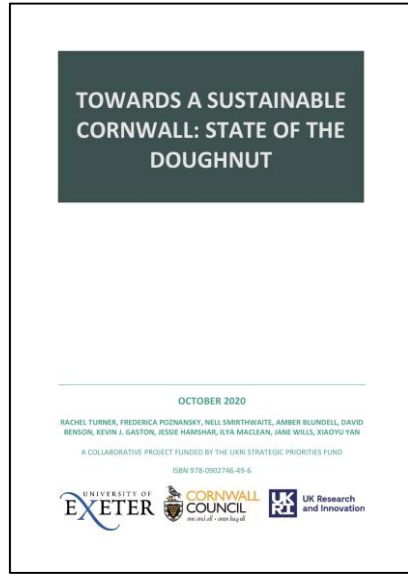
What is Doughnut Economics?

- The Doughnut is an economic mindset which is fit for the context and challenges of the 21st century and is a way of thinking that brings about regenerative change.
- Developed by Kate Raworth at the University of Oxford, Doughnut Economics offers a vision or pathway into what it means for humanity to be able to thrive in the 21st century and is a way of meeting the needs of all people within the means of the living planet.
- The ideas of Doughnut Economics are currently being put into practice in regions and cities in the UK and across the world including Cambridge, Cornwall, Wales, Melbourne, Brussels and Amsterdam.

Source: Raworth, K. (2017a)

A Doughnut approach now being used to be used in a number of regions and cities in the UK and around the world, including Cambridge, Cornwall, Wales, Melbourne, Berlin and Amsterdam, and this study draws on these experiences

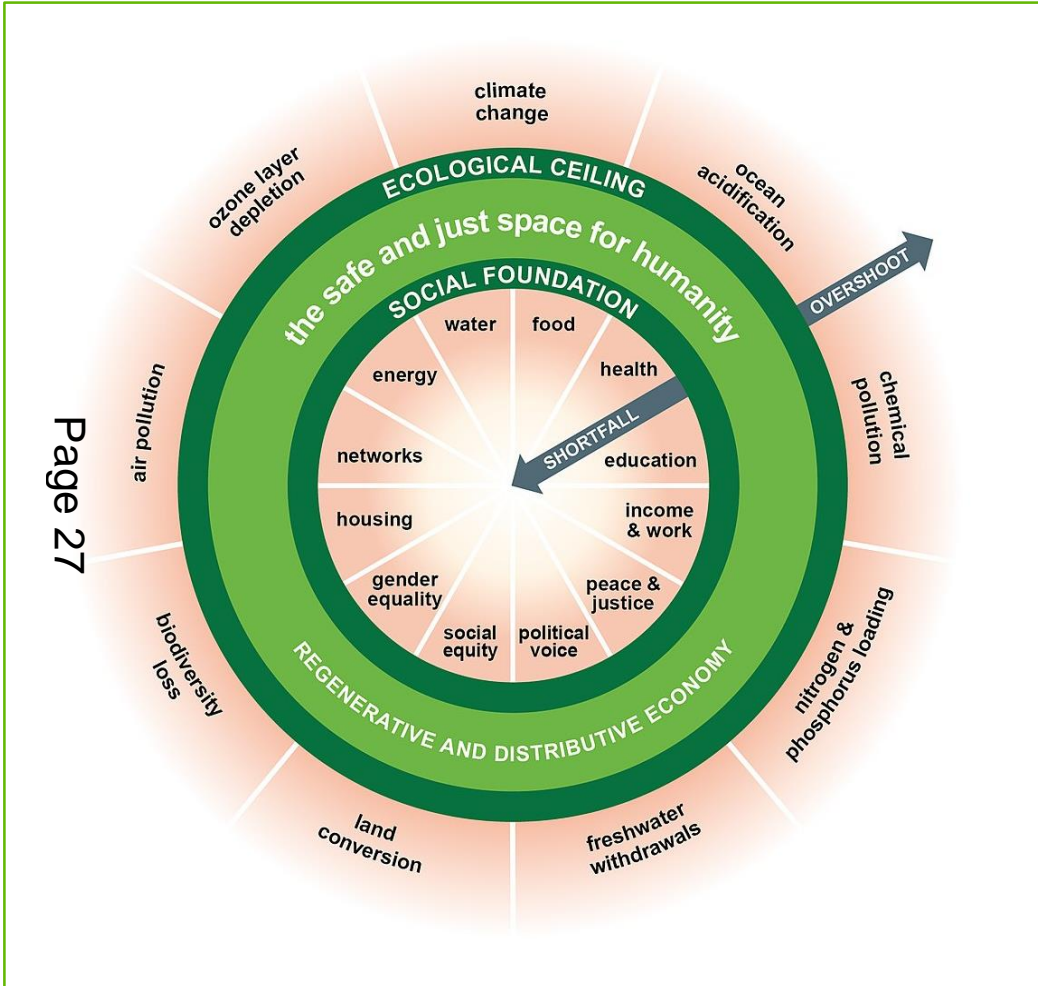
Page 26



Source: TCI (2020); University of Exeter (2020); Oxfam Cymru (2020); DEAL (2020a); Regen Melbourne (2021).



The Doughnut is defined as the ecologically safe and socially just space which meets the needs of all people and in which humanity can thrive



Source: DEAL (2020b)

What is the Doughnut?

The Doughnut is a compass for human prosperity in the 21st century; it consists of two concentric rings:

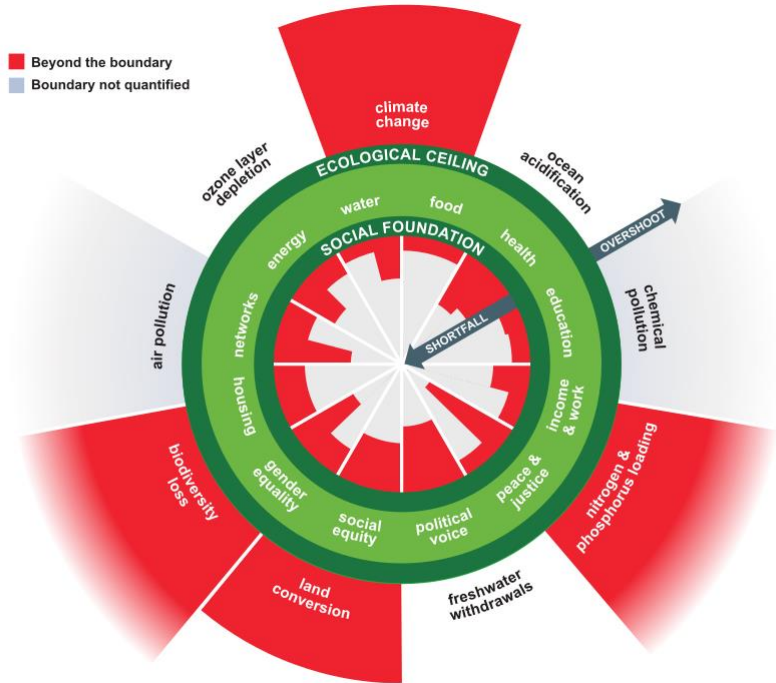
- A **social foundation** – below which lies critical human deprivation, to ensure that no one is left falling short on life's essentials
- An **ecological ceiling** – beyond which lies critical planetary degradation, to ensure humanity does not collectively overshoot planetary boundaries.

Between these two boundaries lies a doughnut-shaped space that is both ecologically safe and socially just – a space in which humanity can thrive.

How do we move from our current situation with ecological overshoots and social shortfalls in so many dimensions to a regenerative and just place?

2021: Example of current situation

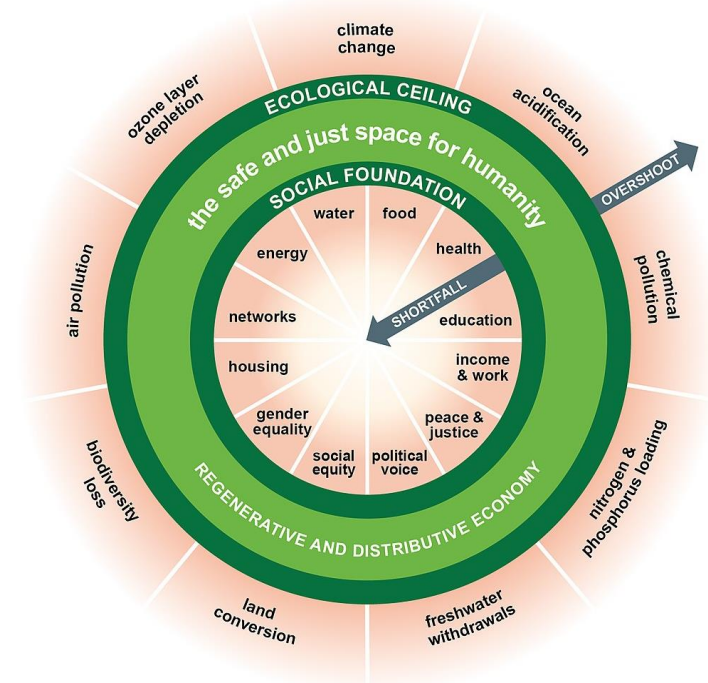
Currently at both a global and a local scale we are overshooting our planetary boundaries and falling below the social foundations needed for human wellbeing, and this is not sustainable.



Page 28

2040: Possible regenerative future for Winchester

By 2040 could a flourishing Winchester District be thriving and healthy with sufficient social foundations and within planetary boundaries, both locally and globally?



Source: DEAL (2020b), Raworth, K. (2017b)

The local portrait or vision can then be turned into transformative action by developing a roadmap with clear steps as has been done in other regions

For example, the **Creating City Portraits Methodological Guide** developed by the Thriving Cities Initiative sets out nine steps to generate action for those who want to develop and implement an effective Doughnut approach in their region or city:

1. Mirror

Reflect on the current state of the city through the portrait's holistic perspective

2. Mission

Create a compelling vision of what it means to become a thriving city

3. Mobilise

Bring together the city changemakers and stakeholders needed to bring about change

4. Map

Identify existing initiatives, policies and strategies that are already taking the city in this direction

5. Mindset

Embrace the values, ways of working and new narratives that underpin the deeper shifts required

6. Methods

Draw on complementary tools that serve to expand the city portrait's analysis and deepen its insights

7. Momentum

Create an interactive process that drives cycles and transformative policy and action

8. Monitor

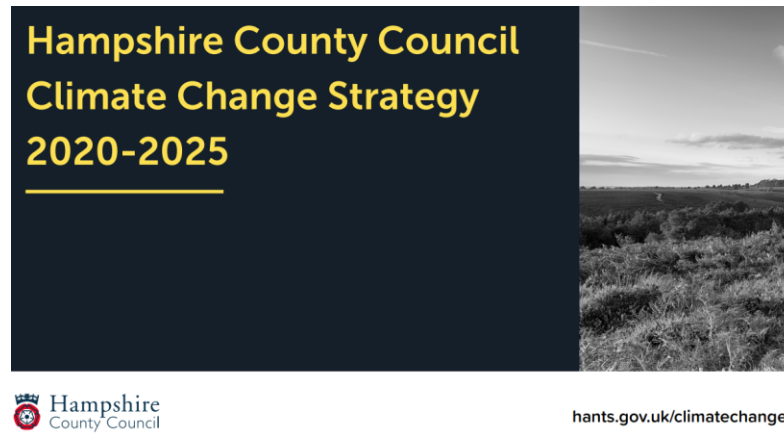
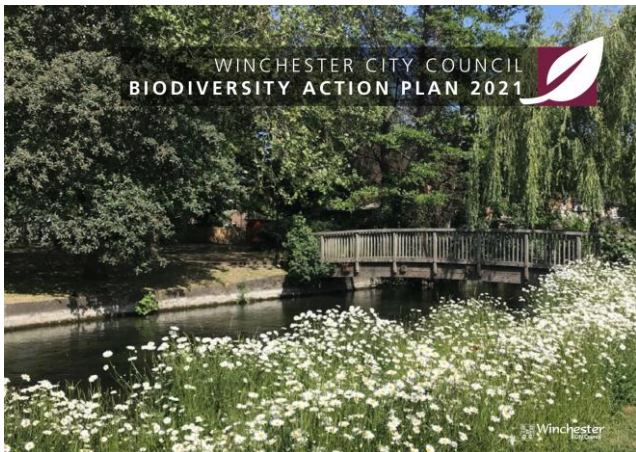
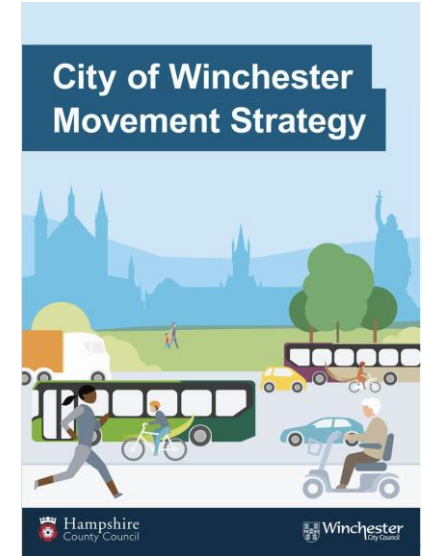
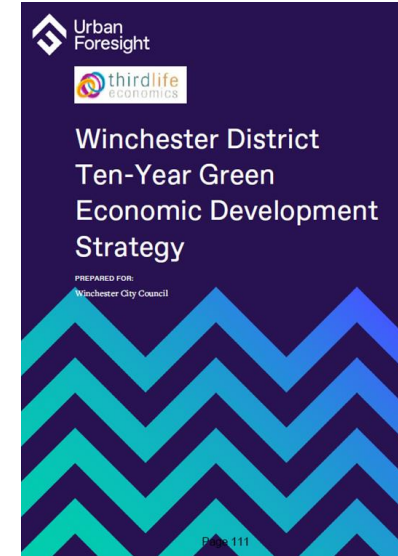
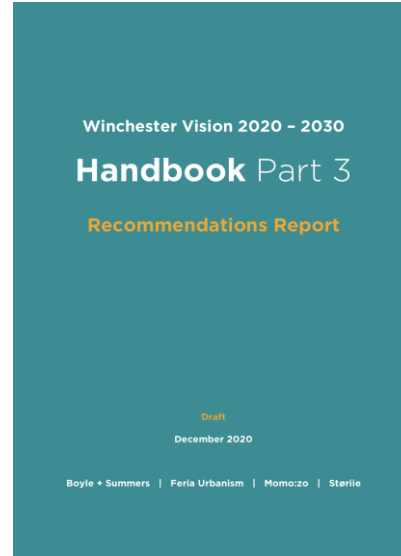
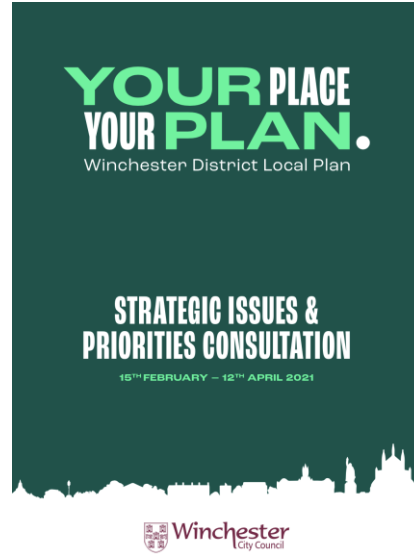
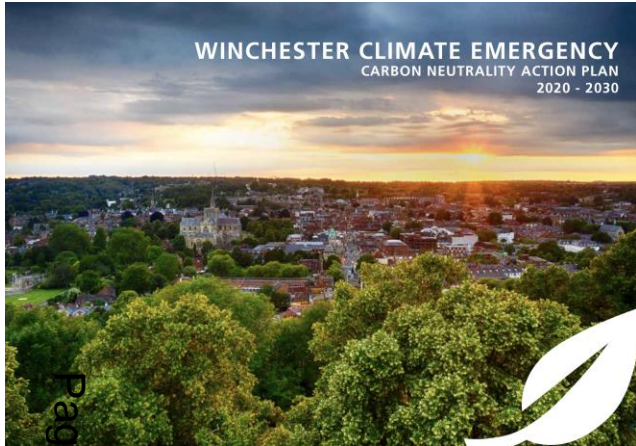
Assess progress against leading indicators that enrich the City Portrait

9. Mmm

Make it irresistible: be creative, have fun, share learning and stories of success, and celebrate

Source: DEAL (2020a), TCI (2020)

A number of key strategies and plans were reviewed in order to understand what they include and how they connect with one another

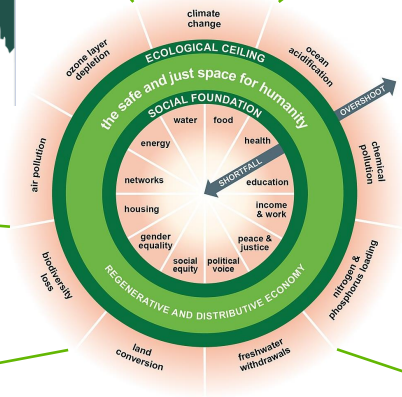
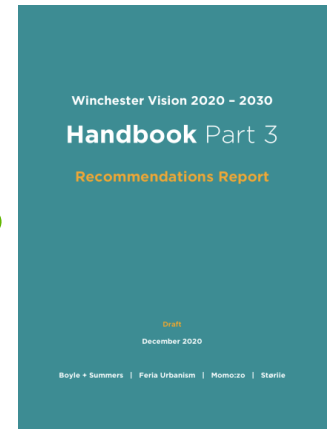
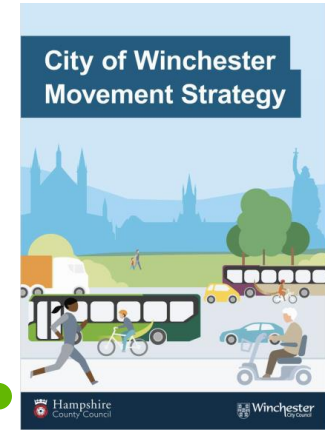
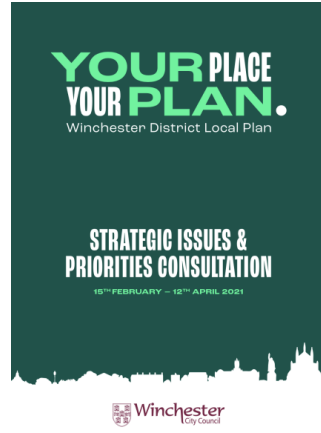
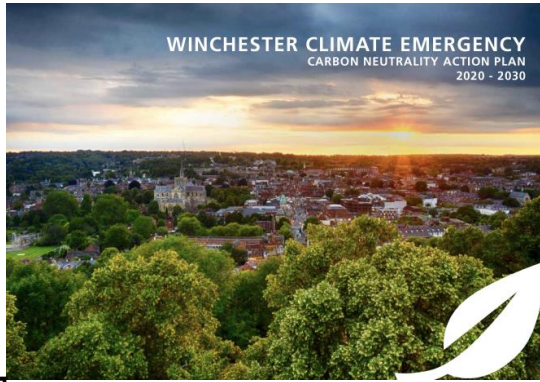


Source: A list of all the documents relating to Winchester that were reviewed for this study is included at the end of this report.

The Ten-Year Green Economic Development Strategy was not included in the review due to the timing of publication.

The Doughnut has the potential to connect and align these existing and future strategies and plans for Winchester District into a holistic framework

Page 31



Source: A list of all the documents relating to Winchester that were reviewed for this study is included at the end of this report.

A simple process has been designed to create a roadmap to an imagined future vision of Winchester using a set of aligned initiatives in four steps

Step 1 – A Future Vision for Winchester

A roadmap needs a destination which acts as the ‘north star’ towards which all policies and strategies are aligned.

For the purpose of the Doughnut work this is provided by the Future Vision of Winchester

This is not a fixed future vision and will emerge and change over time, influenced and guided by all relevant stakeholders.

Step 2 – Mapping the Doughnut

The Future Vision is mapped to the Doughnut with its 12 social foundations and nine planetary boundaries to create a picture of 2040.

Initially this might be with either no or limited overshoots to produce an ideal future scenario.

An equivalent Doughnut map for the present (2021) can be created to show where current overshoots exist.

Step 3 – A Pathway back to the present

The third step in creating the roadmap is to work backwards from the Vision of Winchester 2040 in steps to understand what pre-conditions will have been needed at each stage to have reached that stage.

This will create a connected, robust Pathway from the future Vision to the present with regular waypoints.

Step 4 – Creating a detailed Roadmap

The final step is to map the existing initiatives from key policies strategies & plans from WCC and other relevant local organisations onto the Pathway created in Step 3 and iterate.

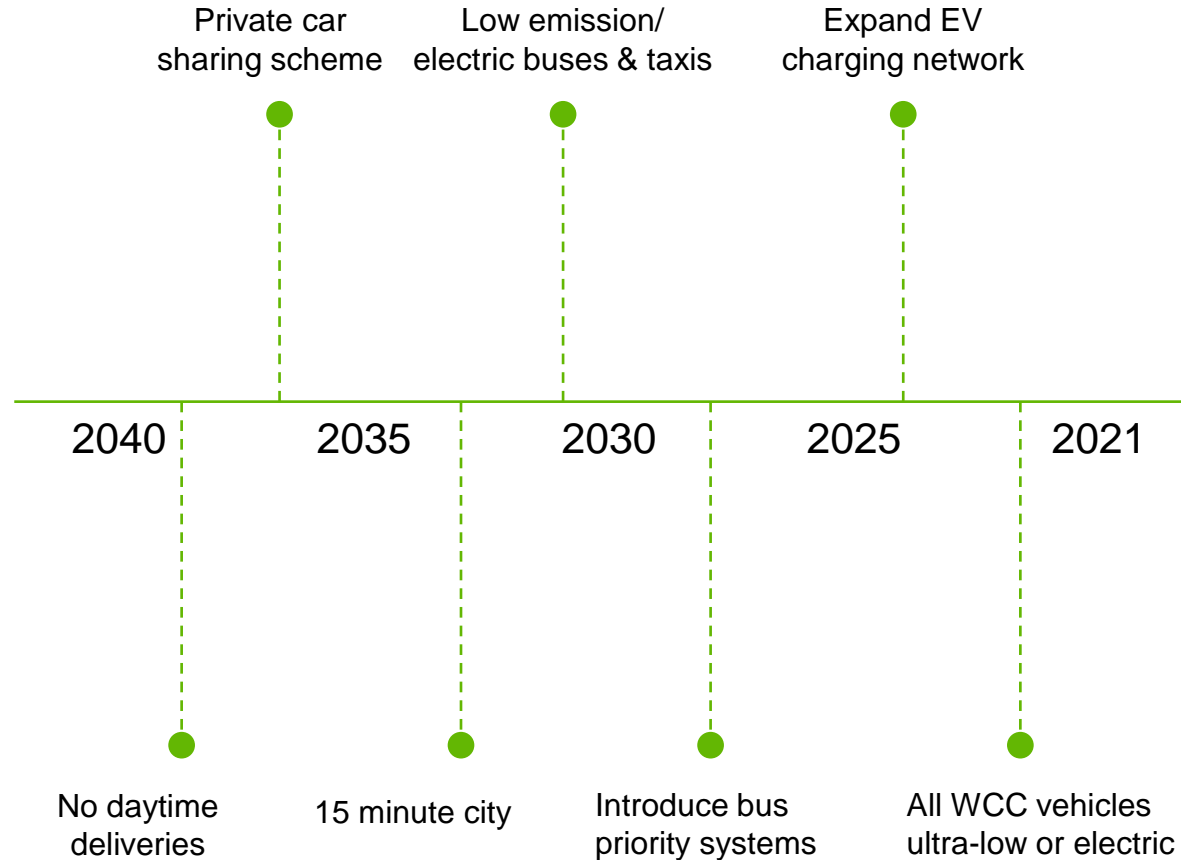
This approach will also identify any gaps in the planned initiatives which are required to achieve the ‘target’ overshoots defined in the 2040 Doughnut.

Example for transport: we can work backwards to understand which initiatives and pre-conditions are needed to achieve the 2040 vision

EXAMPLE

Example Vision for 2040: private car ownership at 70% of current levels, 50% of private cars are electric, 15 minute bus frequency on key routes, all electric and low emission bus fleet, no deliveries in towns or cities between 7am and 7pm. 80% of deliveries by electric or person powered vehicles

Page 34



Theoretical example:

Current situation - private car ownership at 1.3 cars per household, <1% of private cars are electric, average 30 minute bus frequency on key routes, limited restriction on freight deliveries, <1% of deliveries by electric or person powered vehicles

Note: these initiatives have been drawn from the reports reviewed but are used here in combination purely for illustrative purposes

Key findings

- The Doughnut provides a framework to integrate policies and strategies to address the climate emergency
- Doughnut Economics is already being used in many regions and cities around the world, including in the UK
- A Doughnut methodology can be used to create a roadmap for action to guide systemic improvement
- It is important to identify a 'north star' of intent and purpose for the region or city
- Cooperation and co-creation are essential to take the community and all stakeholders into a better future together
- Successful development of a Doughnut approach comes from a group of committed individuals working closely with and supported by local organisations and local government

Page 35

Key recommendations

- Implement the Doughnut as a core framework for Council decision making and communications
- Use the Doughnut to bring the Climate & Biodiversity Emergency alive – for members, officers and the public
- Work together with other local authorities and organisations with a role or an interest in Winchester District to introduce the concept of Doughnut Economics and the development of a local Doughnut
- Compile and agree a set of appropriate quantified indicators for Winchester District
 - Develop a dashboard to enable WCC to model the impact of all policies and initiatives
 - Create a check sheet to review proposed actions and initiatives with the Winchester Doughnut
- Define a holistic vision aligned to the 7th generation principle (the Children's Fire) or the principles of the Well-Being of Future Generations Act (Wales)

Page
36

Final thoughts

- We need to work collaboratively to create a flourishing environment for all through:
 - Co-creating projects which move us all towards zero-carbon
 - Manifesting and following the energy
 - Using the power of place and connections to create and unlock
 - Creating a strong network of individuals who can hold the space
 - Weaving the threads of this work and crafting the stories to create *the more beautiful world our hearts know is possible*

Page 37

Making Winchester a place in which everyone thrives

Will Adeney



will@greenwessex.org
mobile: 07771 850564
www.wessexgreenhub.org

Dr Savithri Bartlett



savithri.bartlett@
winchester.ac.uk
mobile: 07961 116038
www.wessexgreenhub.org

Dr Tammi Sinha



Tammi.Sinha@solent.ac.uk
mobile: 07802 366690
www.wessexgreenhub.org

Thank you

This page is intentionally left blank